

My Local Area and Tromsø, Norway

Knowledge Organiser

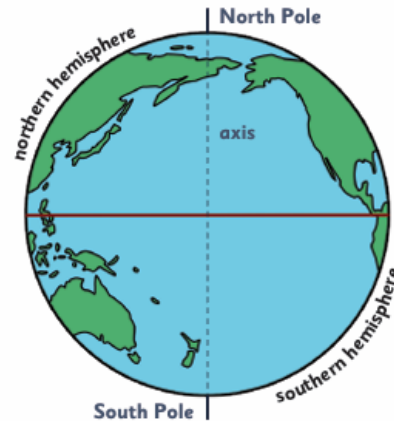
Year 2

The equator

The Earth's equator is the **imaginary line that runs around the globe's centre**. It divides the world in **half**.

The equator is an **equal distance** between the **North and South Poles**.

The weather on the equator is **hot all year round**.



The climate near the equator

Countries near the equator don't experience the **four seasons** like other places on Earth.

Generally, there are **two seasons** in the countries along the equator, **wet and dry**. The wet season lasts **most of the year**. Along with the warmth, this creates **tropical rainforests**.

It is hot because it is the **closest part of the Earth to the Sun**.

The United Kingdom

The United Kingdom is made up of four different countries: **England, Scotland, Wales and Northern Ireland**. It is sometimes mistakenly called **Great Britain**, but Great Britain only includes **England, Scotland, and Wales**.

Capital cities

Each country has a **capital city** where a country's government is located. It is usually the largest city.

London is England's capital city.

Belfast is Northern Ireland's capital city.

Edinburgh is Scotland's capital city.

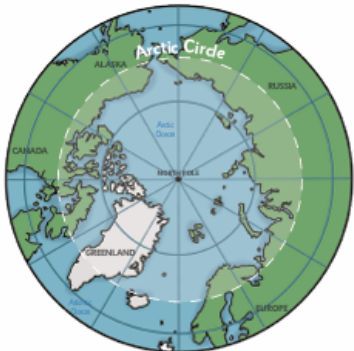
Four seas border the UK:

- to the south by the **English Channel**, which separates it from continental Europe
- to the east by the **North Sea**
- to the west by the **Irish Sea** and the **Atlantic Ocean**



The North Pole

The North Pole is the **northernmost point** on Earth. There is **no land** at the North Pole, **only ice**. The ice is about **three metres thick**. The North Pole is **not in any country**. In summer, the **Sun never sets**.



The South Pole

The South Pole is the **southernmost place** on Earth. It is located **on land** topped by more than **2700 metres of solid ice**. The South Pole is **much colder** than the North Pole.



Where is Tromso, Norway?

Norway is a country in Europe. The capital city of Norway is Oslo.

Tromso is a city in Norway.

Most of Tromso is on an island, and the rest is on the mainland. Tromso has a sub-arctic climate, usually with long, cold winters and short, warm-to-cool summers.



Aerial photos

An aerial view is a photo taken from above. You can look at the geographical features of a place using an aerial photo.



Map symbols

Map symbols are pictures, drawings or even letters that can be used on maps to represent things in real life. They make it easier to read maps.

Map key

A map key gives the map reader information about each symbol displayed on the map. It is usually in a box and found somewhere in the corner of the map.

Key	
	contour lines
	lake
	river
	forest
	moorland
	mountain peak
	beach
	cliffs
	houses
	log cabin
	ferry
	bridge
	road

The physical features of Tromso

Tromso is famous for being one of the best places in the world to see the Northern Lights. At night, you can see lights dancing and moving in patterns across the sky at certain times of the year.



Tromsdalstinden



Tromso forest



Kaldfjord, Norway



Steindalsbreen glacier



Lake Prestvannet



Norwegian Sea

The human features of Tromso

Tromso has many distinctive and famous buildings. Tromso is well known for its colourful wooden houses. In the past, Norwegians painted their houses red, yellow or white.



Arctic Cathedral



Tromso Bridge



Polaria aquarium



Tromso Harbour



Fangstmonument (Arctic Hunter)



Tromso City Library and Archive