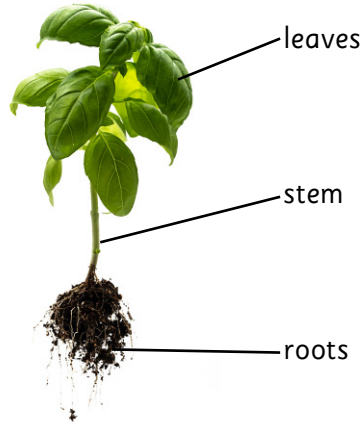


# Plants

## What is a plant?

A plant is a **living thing** that often has **roots, stem and leaves**. We might not see the roots that **grow underground**. Most plants have **green leaves** which help them to **make food**.



Plants come in all shapes and sizes!



## How do we know a plant is alive?

We might not see a plant move, but we can still tell that it is alive.



Plants need **water**.



Plants **grow** and **change**.



Plants can **make** new plants.

## Key vocabulary

<p>alive</p>	<p>bulb</p>	<p>compare</p>	<p>conditions</p>	<p>damp</p>
<p>dead</p>	<p>flower</p>	<p>fruit</p>	<p>healthy</p>	<p>investigate</p>
<p>leaves</p>	<p>living</p>	<p>plant</p>	<p>prediction</p>	<p>roots</p>
<p>seed</p>	<p>shade</p>	<p>sheltered</p>	<p>spiky</p>	<p>stem</p>

## Seeds and bulbs

New plants can grow from **seeds** and **bulbs**.



**Seeds** come in all shapes and sizes.



Bulbs are a **round part** of a plant that **grows underground**.

## How do seeds grow?



Seeds **need water** but **not soil** at first.

They **grow roots** and then a **shoot**.

## How do bulbs grow?



A **bulb** is made up of **layers**.



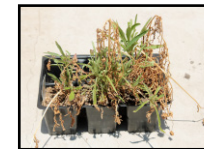
Bulbs **need water** to grow.

**Roots** grow from the **bottom**.

A **shoot** grows up from the **top**.

## What does a plant need to stay healthy?

If a plant does not get the right **growing conditions**, it **cannot keep growing** and **stay healthy**.



## Plants need the right amount of water.



All plants need water.



Some need lots of water.



Some don't need much water.

## Plants need the right amount of light.



All plants need light.



Some need lots of light.



Some prefer the shade.

## Plants need the right temperature.



Some grow when it is cold.



Some like it hot.



Plants change with the seasons.